

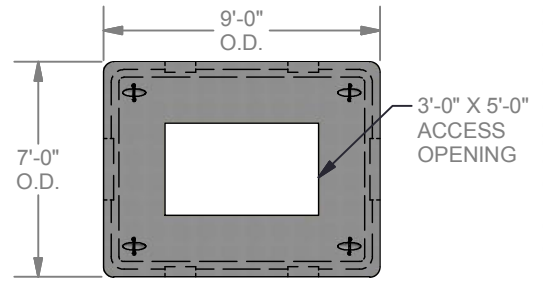
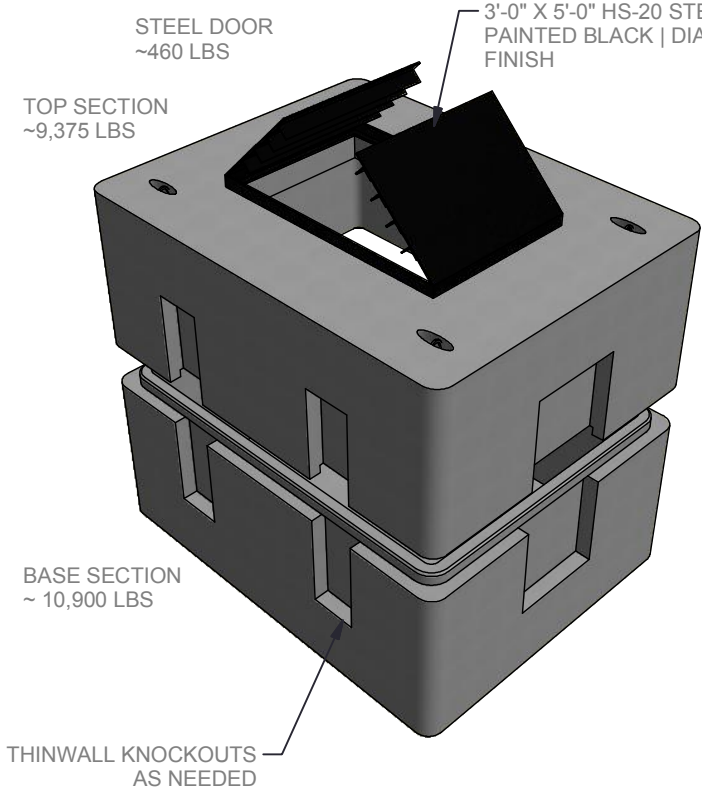


STRUCTURE ID: 203000

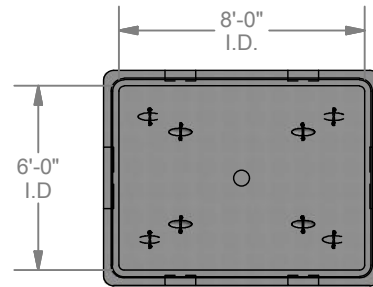
Precast Concrete 6'-0" x 8'-0" x 6'-0"  
**Electrical Manhole**



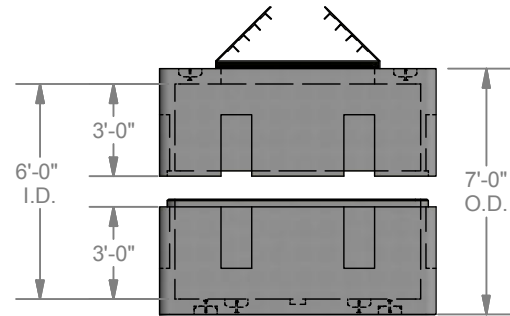
Precast Concrete 6'-0" x 8'-0" x 6'-0" Electrical Manhole :: STRUCTURE ID : 203000



**PLAN VIEW (TOP)**



**PLAN VIEW (BOTTOM)**



**ELEV. VIEW**

### STANDARD MANHOLE FEATURES

- Designed for HS-20 Loading
- Segmented Thin Wall Knockouts (shown)
- Pull Irons Cast In Floor (shown)
- 6"Ø Sump Recess In Floor (shown)
- 2" Ø Ground Hole in Floor (shown)
- Hot Dipped Galvanized Steel Cover (shown)
- Diamond Plate Finish on Cover (shown)
- Smooth Corners for Safe Installation & Quality & **It Just Looks Better!**

### MANHOLE OPTIONS

- Unistrut Cast Into Wall for Racking in lieu of Bolt Inserts
- Terminators Cast Into Wall in lieu of Thin Wall Recess
- Non-Metallic Racking
- Plastic Coated Racking
- Cast In Grounding Lug
- Pull Irons - Add or Change Locations
- Aluminum Lid in lieu of Galvanized Steel Lid
- Divider Plate for Multi-Purpose Boxes

**LOCKE**  
SOLUTIONS

PROUDLY BASED IN  
HOUSTON, TEXAS

T : 832-804-7062  
F : 832-804-7071  
E : info@lockesolutions.com

LOCKESOLUTIONS.COM