

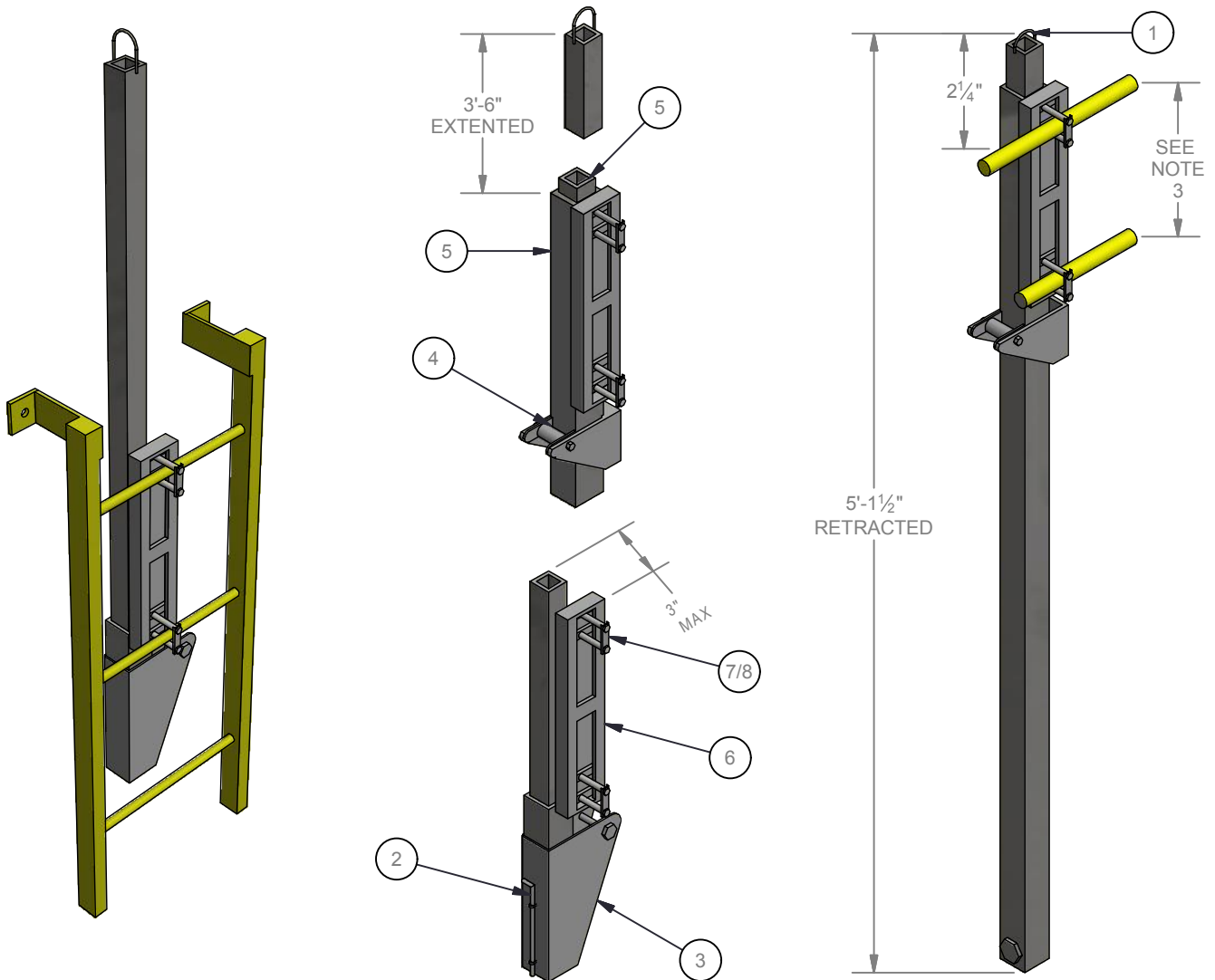


STRUCTURE ID: R500

Bilco Company | LU-2 Steel/ Hot Dipped Galv.
Ladder Up Safety Post



Bilco Company | LU-2 Steel/ Hot Dipped Galv. Ladder Up Safety Post :: STRUCTURE ID : R500



SPECIFICATIONS

1. Pull Up Loop
2. Release Rod W/ Vinyl Lift Handle
3. Lock Up Bracket
4. Balancing Spring
5. Square Tubing
6. Adjustable Mounting Channel
7. Clamp Bracket
8. Stainless Steel Mounting Bolts (3/8-16 x 2")

NOTES:

1. The Bilco LadderUP safety post is furnished completely assembled ready to mount on rear of ladder with clamp brackets on climbing side. Ladder must be structurally sound and securely anchored.
2. On hollow round rung ladders insert solid round bar (same length as rung) into top two rungs to provide additional strength and prevent crushing of the rung when the LadderUP is fastened.
3. Adjustable mounting fits ladders with rung spacing up to about 14" center to center.
4. Clamp bracket may be reversed to accommodate rung sizes of 3/4" to 1 1/4" with standard 2" bolts furnished. Larger rungs will require longer bolts.

LOCKE
SOLUTIONS

PROUDLY BASED IN
HOUSTON, TEXAS

T : 832-804-7062
F : 832-804-7071
E : info@lockesolutions.com

LOCKESOLUTIONS.COM