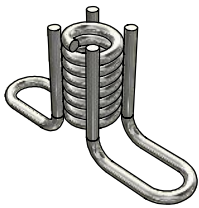


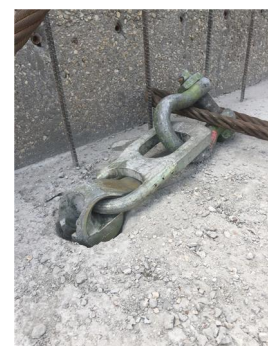
UTILITY ANCHORS



COIL INSERTS



DOGBONES





STRUCTURE ID E120, E140, E150, E155

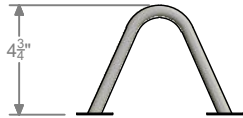
Galvanized
Utility Anchors



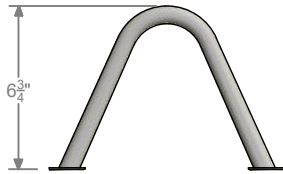
Galvanized Utility Anchors :: STRUCTURE ID : E120, E140, E150, E155



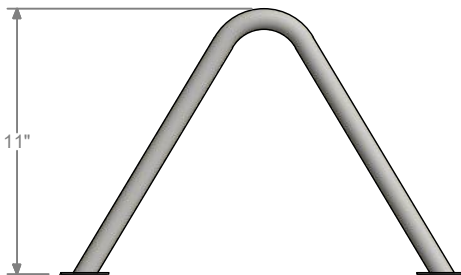
3" UTILITY ANCHOR



5" UTILITY ANCHOR



7" UTILITY ANCHOR

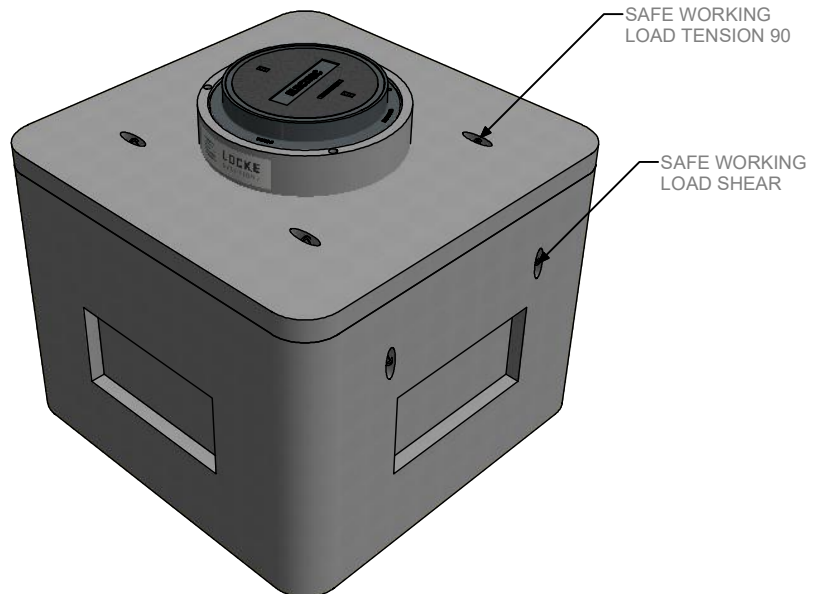


11 UTILITY ANCHOR

UTILITY ANCHORS				
PRODUCT ID	SIZE	SAFE WORKING LOAD TENSION 90	SAFE WORKING LOAD SHEAR 90	MIN. EDGE DISTANCE
E120	3"	3,200 LBS	5,800 LBS	9"
E140	5"	7,320 LBS	15,780 LBS	12"
E150	7"	10,830 LBS	18,850 LBS	16"
E155	11"	24,000 LBS	24,000 LBS	30"



*APPROX. FACTOR SAFETY 4:1
AVAILABLE IN GALVANIZED OR STAINLESS STEEL



LOCKE
SOLUTIONS

PROUDLY BASED IN
HOUSTON, TEXAS

T : 832-804-7062
F : 832-804-7071
E : info@lockesolutions.com

LOCKESOLUTIONS.COM

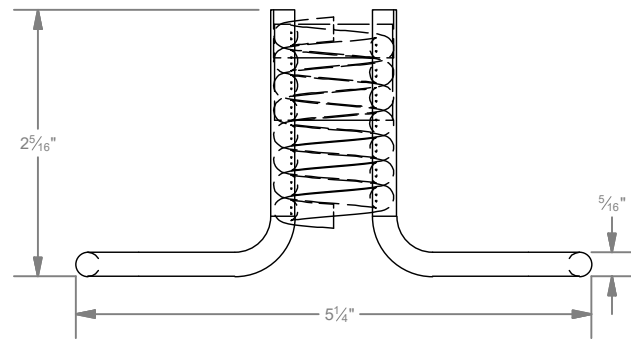


STRUCTURE ID: E190

1" DIA. X2"
Coil Insert



1" DIA. X2" Coil Insert :: STRUCTURE ID : E190



ELEV. VIEW

E63 COIL INSERT & F49A EYE BOLT

COIL INSERT INFORMATION:

Designed for Use in Very Thin Slabs or Other Conditions Where a Longer Insert Cannot Be Used. Inserts Should be Set Back 1/2" From the Surface of the Concrete, Maintaining at Least 3/4" of Concrete Below the Insert. Minimum Spacing Between Inserts is Twice the Minimum Corner Distance.

F63 Flared Thin Slab Coil Insert					
BOLT DIAMETER	INSERT HEIGHT	MIN. EDGE DISTANCE	MIN. CORNER DISTANCE	SAFE WORKING LOAD TENSION	SAFE WORKING LOAD SHEAR
1"	2- 5/16"	8"	8"	2,460 lbs	1,970 lbs

LOCKE
SOLUTIONS

PROUDLY BASED IN
HOUSTON, TEXAS

T : 832-804-7062
F : 832-804-7071
E : info@lockesolutions.com

LOCKESOLUTIONS.COM



STRUCTURE ID: E210

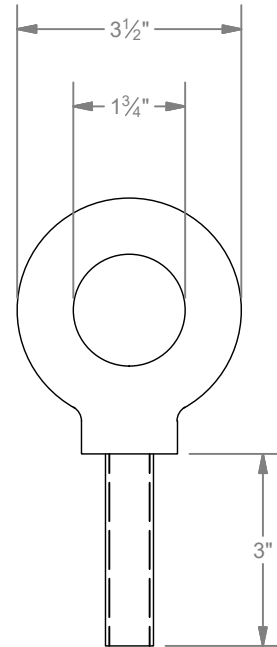
1" DIA
COIL EYE INSERT EYE BOLT



1" DIA COIL EYE INSERT EYE BOLT :: STRUCTURE ID : E210



E63 COIL INSERT & F49A EYE BOLT



ELEV. VIEW

EYE BOLT INFORMATION:

The F49A Eye Bolt is a Forged, Carbon Steel, One Piece, Shoulder Pattern Eye Bolt. It is Available With 3/4" or 1" Diameter Coil Threads and Stocked in 3- 1/2" and 6" Lengths. Other Lengths are Available Special Order. In Order to Develop the F49A Eye Bolt's Rated Load, the Shoulder Must be Tightened Firmly Against the Face of the Concrete. The Eye Bolt is Intended for Straight Tensile Loading Only; Pulling or Lifting at an Angle Drastically Reduces the Safe Working Load and is not Recommended. The F49a Eye Bolt Meets Material Requirements of ASTM Standard A-489.

F63 Flared Thin Slab Coil Insert	
BOLT DIAMETER	SAFE WORKING LOAD TENSION
1"	6,400 lbs

LOCKE
SOLUTIONS

PROUDLY BASED IN
HOUSTON, TEXAS

T : 832-804-7062
F : 832-804-7071
E : info@lockesolutions.com

LOCKESOLUTIONS.COM